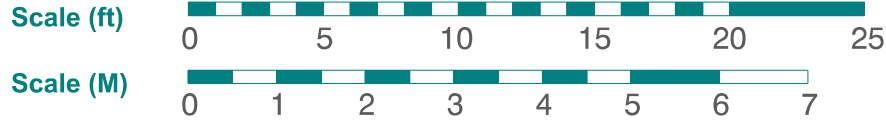
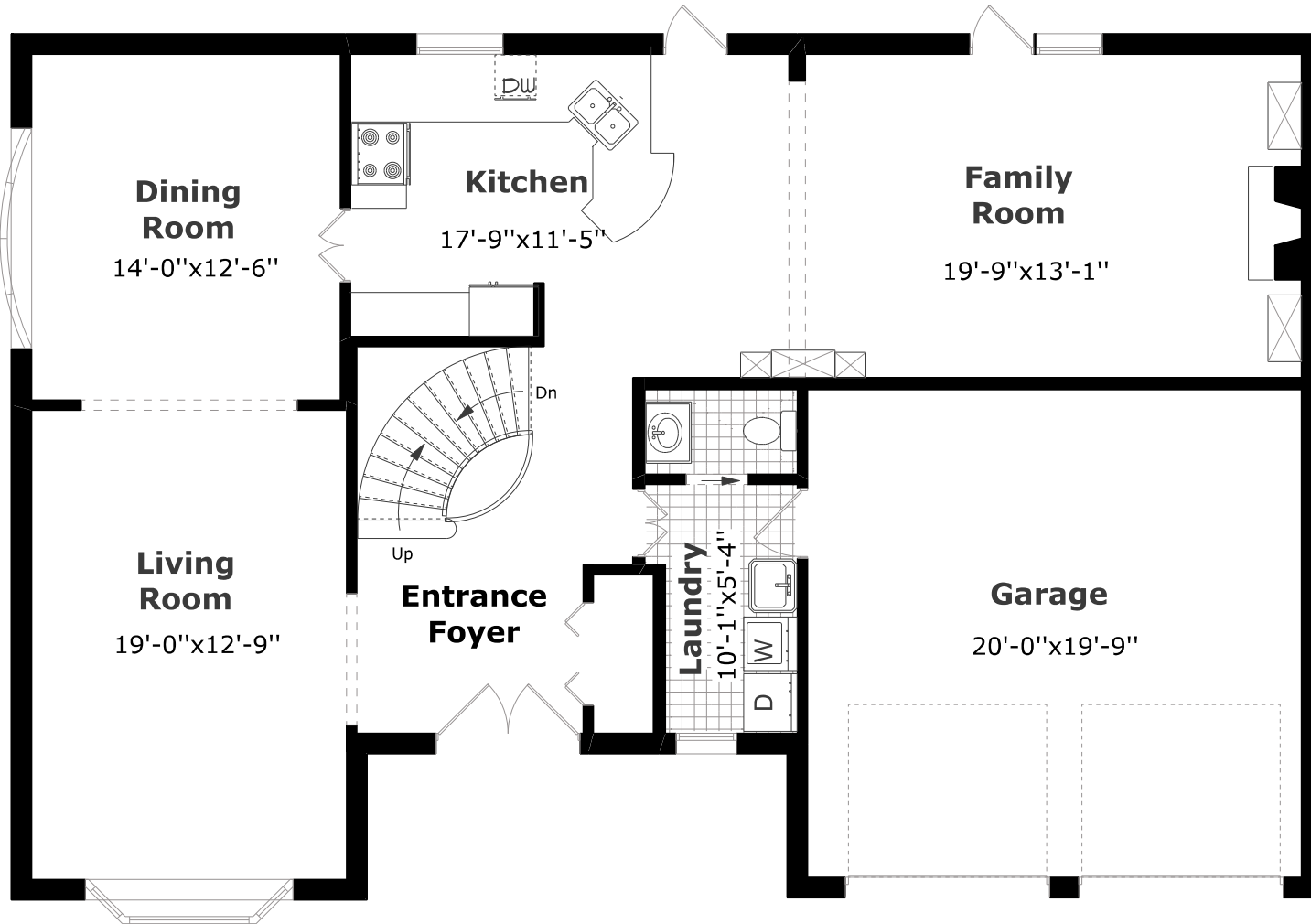


# 2530 Annelyn Court



March 2019

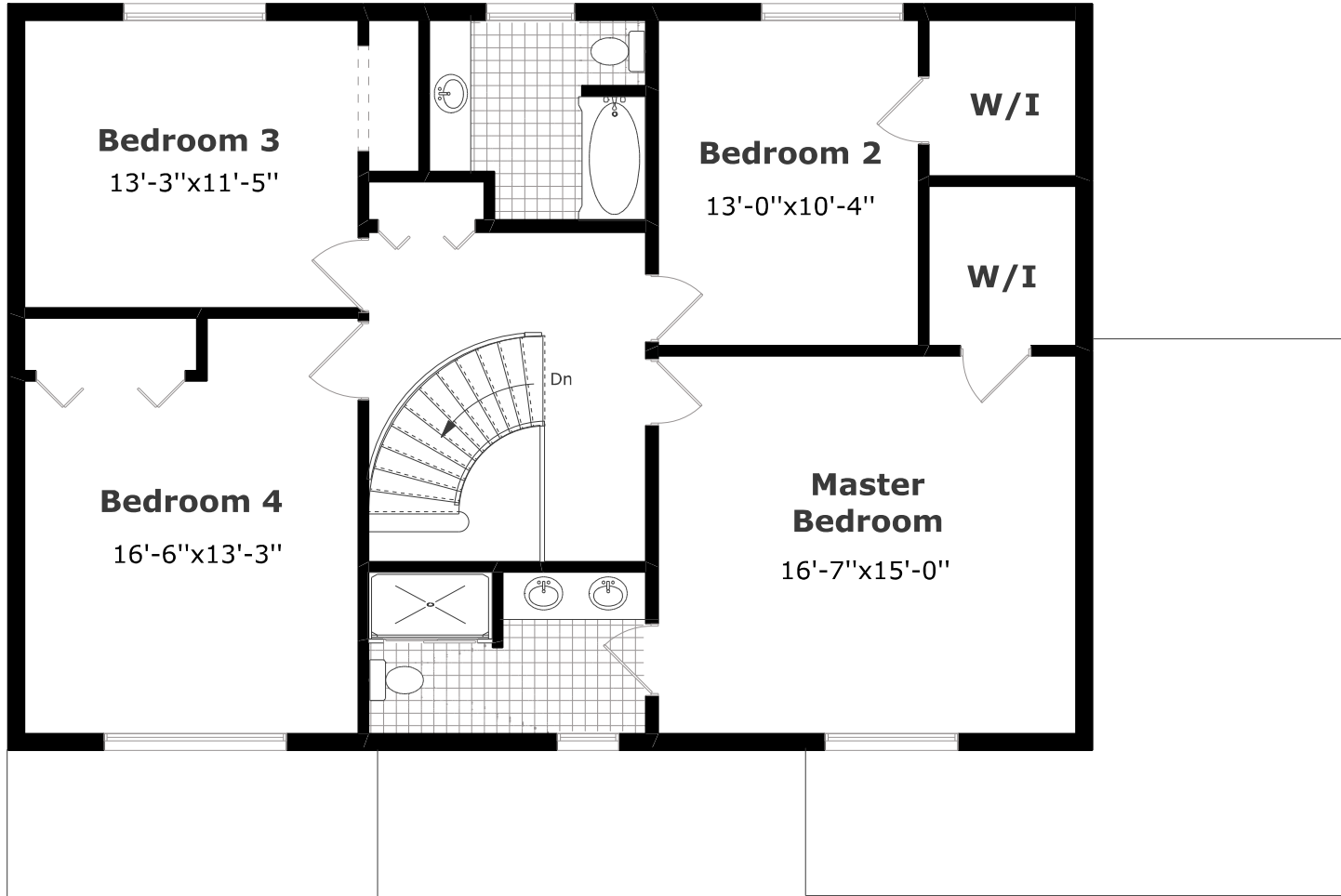
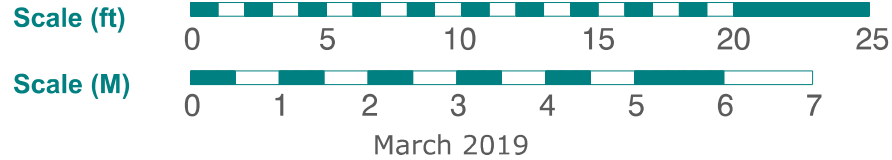


## Main Floor Plan

1,326.3 sq. ft. +  
433 sq. ft. (Garage)



# 2530 Annelyn Court

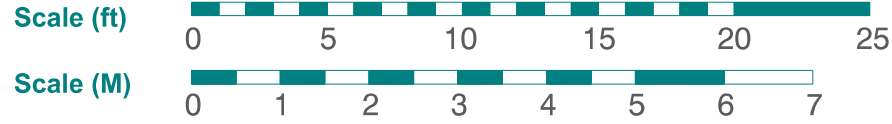


## 2nd Floor Plan

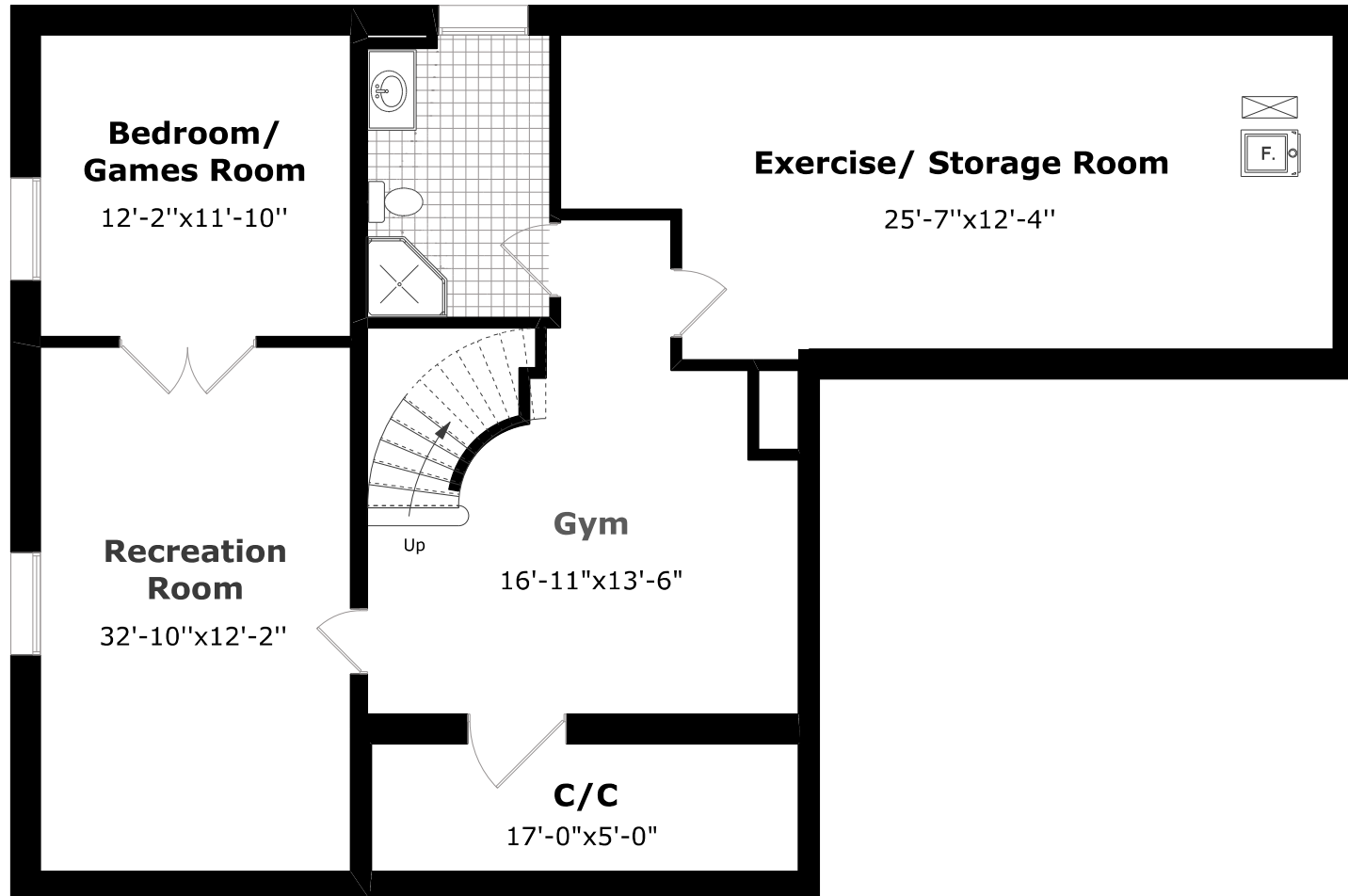
1,278.1 sq. ft.



# 2530 Annelyn Court



March 2019



## Basement Plan

1,429.4 sq. ft.

