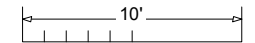
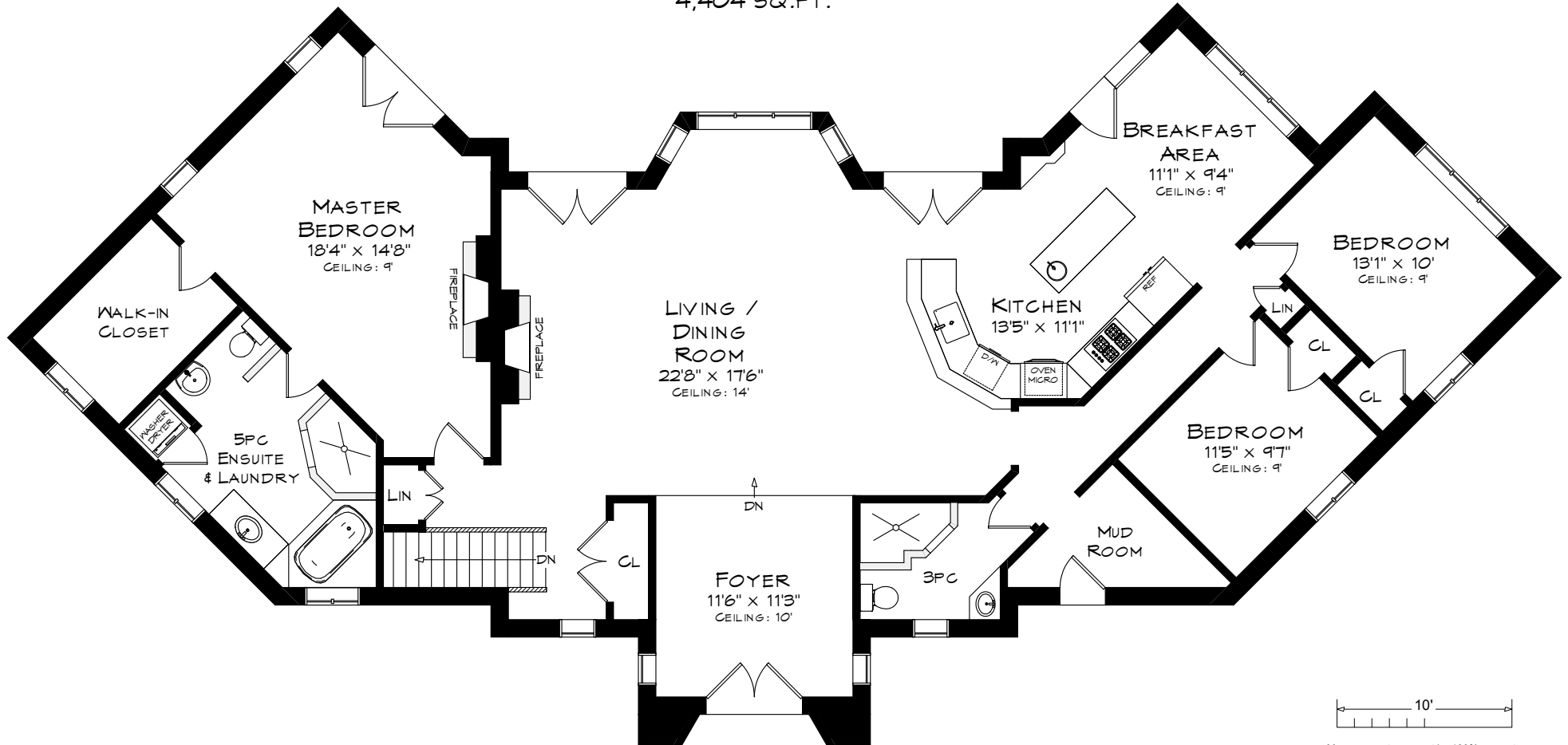




# 1550 BLAIR ROAD

TOTAL SQUARE FOOTAGE  
4,404 SQ.FT.

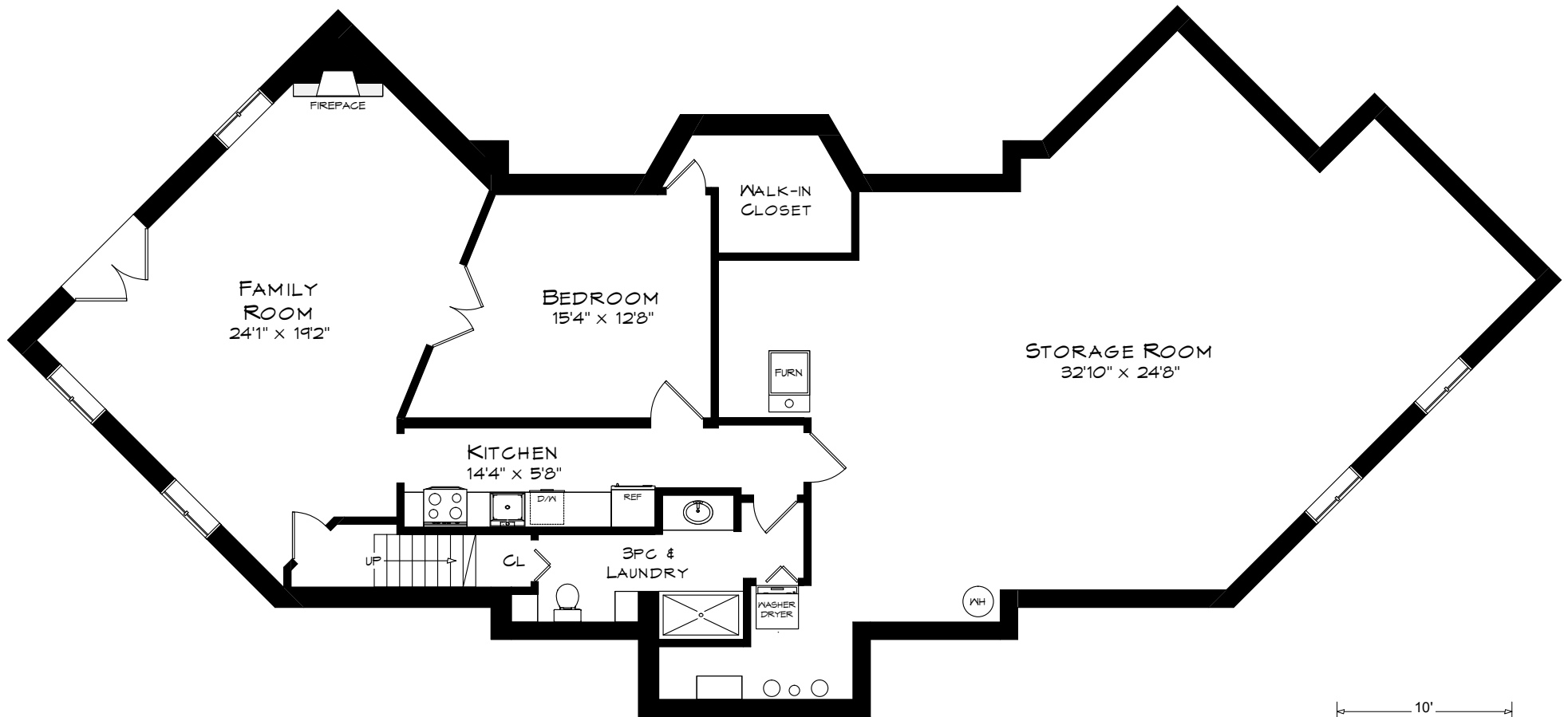


Measurements may not be 100% accurate  
and should be used as a guideline only.

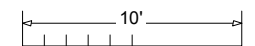
MAIN LEVEL  
2,209 SQUARE FEET



# 1550 BLAIR ROAD



LOWER LEVEL  
2,195 SQUARE FEET



Measurements may not be 100% accurate  
and should be used as a guideline only.